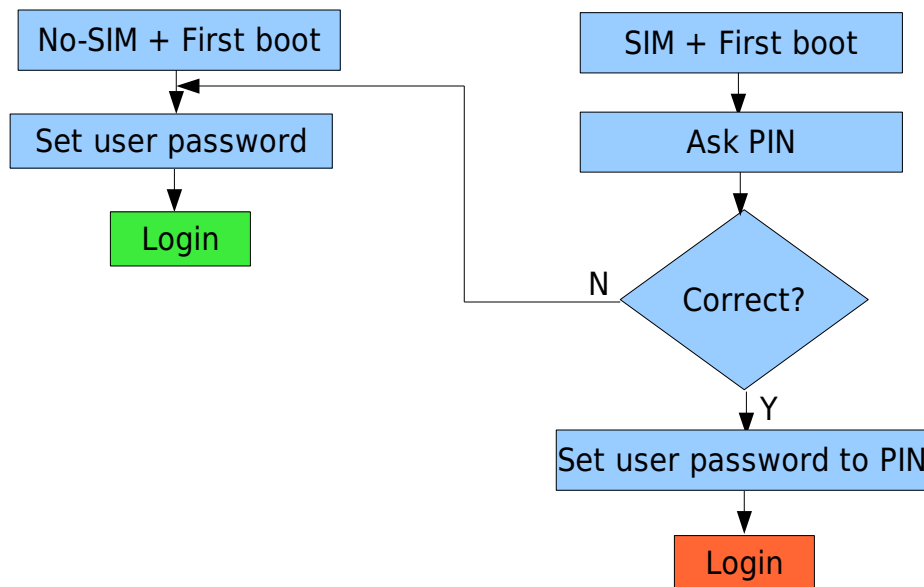


Login Manager (RFC)

Copyright © 2007. Shakthi Kannan.
Version 0.2

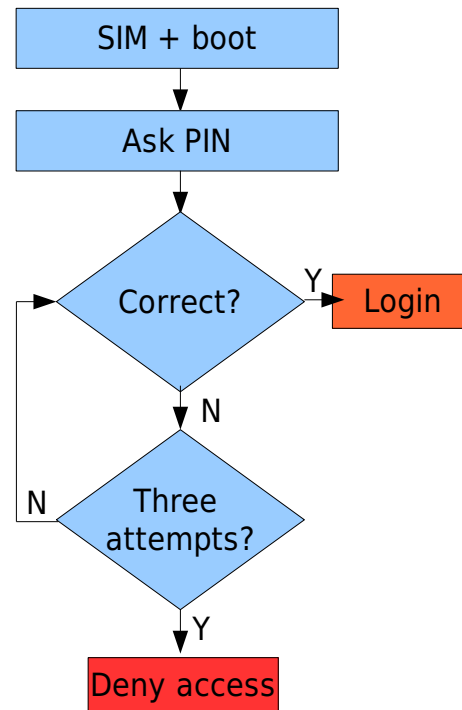
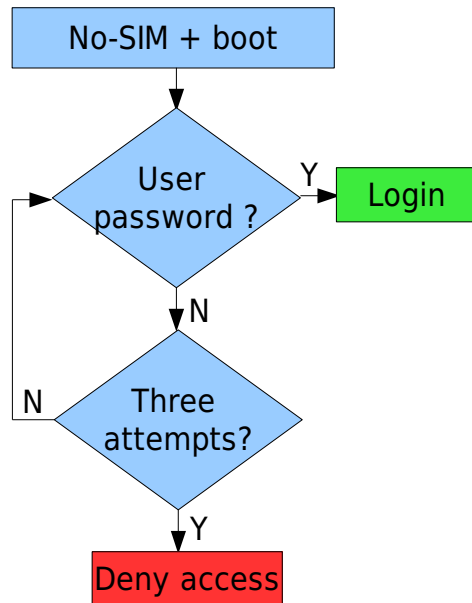
Permission is granted to copy, distribute and/or modify this document under the terms of the GNU Free Documentation License, Version 1.2 or any later version published by the Free Software Foundation; with no Invariant Sections, no Front-Cover Texts, and no Back-Cover Texts.

First Boot



- * You want to set a user password to prevent access to organizer applications in case the phone is stolen.
- * Setting user password can be re-entered to verify it.
- * You don't want the end-user to remember two passwords, hence PIN is copied to user password, and only one password is prompted for.
- * If user password is forgotten, use "Password Reset Mechanism".

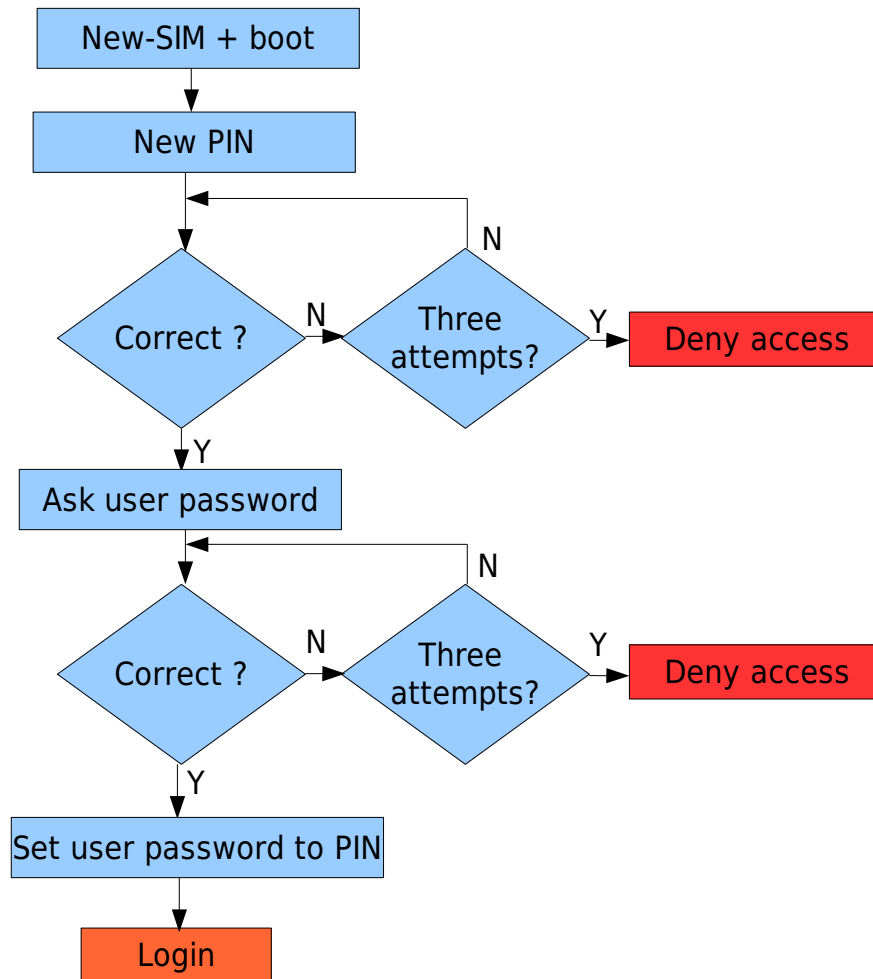
Regular use



Key:

- * Orange "login" means access to organizer + GSM.
- * Green "login" means access to only organizer applications.
- * Red "deny access" means deny access to using the phone.
- * Blue color means some processing tasks.

Changing SIM card/selling the phone to somebody



- * Old user password is required to use the phone and organizer applications. Else, it might be the case of a stolen phone.
- * Updated user password to new PIN value so it can be checked for in regular use.
- * If user password is forgotten, see below, "password reset mechanism".

Password Reset Mechanism

The “real” owner of the phone should be able to reset the user password in case:

- * he/she forgets the password, maybe through some secret question/answer with FIC/OpenMoko.

- * he/she would like to sell the phone to somebody else, so they can use it. So, you don't have to reveal your previous user password.

Any third-party should not be able to reset the password, in case the phone is stolen.

So, some mechanism should be worked out here.